



Buccan Panel System

Technical Information Pack

- System Overview
- System Configurations
- Product Data



The **Buccan Panel System** offers an attractive, functional, and cost-effective solution for a perforated façade on a building. The system is fully unitized resulting in a reduced installation duration and therefore reduced costs compared to a non-unitized system.

Uses and Applications:

- Works well for both new construction and retrofit applications.
- The Buccan Panel System can be mounted to many types of structures including: precast concrete, cast-in-place concrete, steel structures, and stud walls.

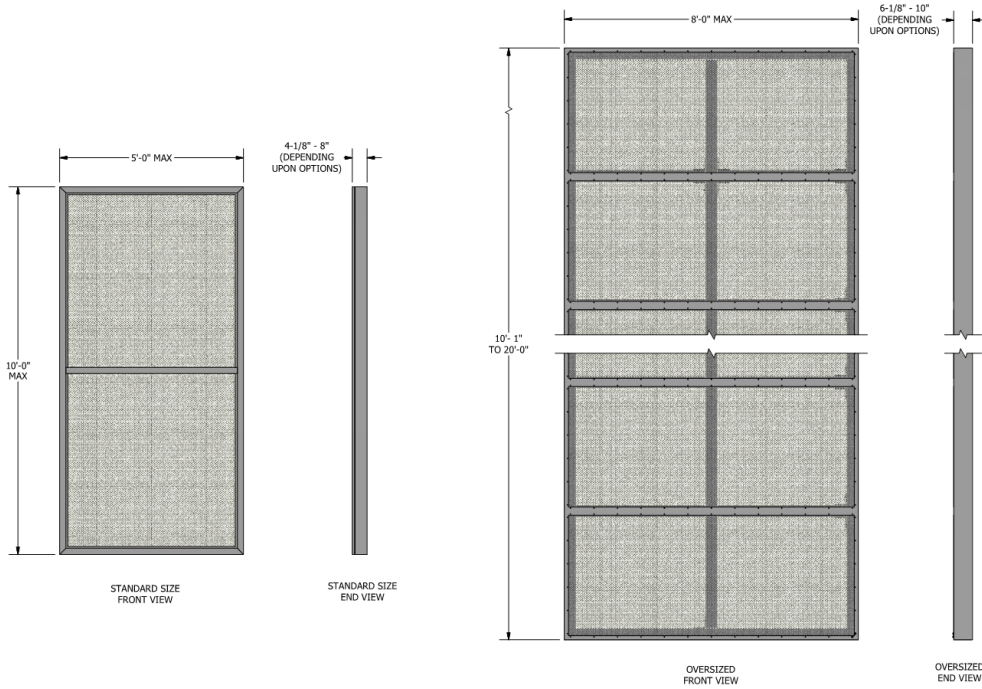
Engineering:

- The Buccan Panel System will be custom engineered to your specific application allowing you to select from a greater number of available options.

Advantages:

- Many different product configurations
- Contributes to enhanced visual impact
- Gives your building a clean, contemporary look.





Standard Size Panels:

Maximum Dimensions: 5'-0" x 10'-0"

Depth: 4 1/8" to 8" depending on options selected

Oversized Panels:

Maximum Dimensions: 8'-0" x 20'-0"

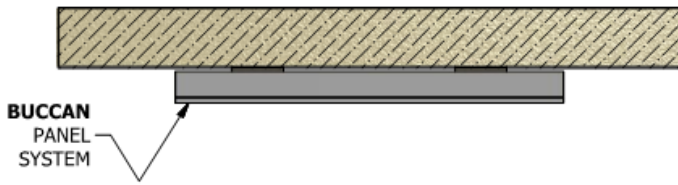
Depth 6 1/8" to 10" depending on options selected

Orientation:

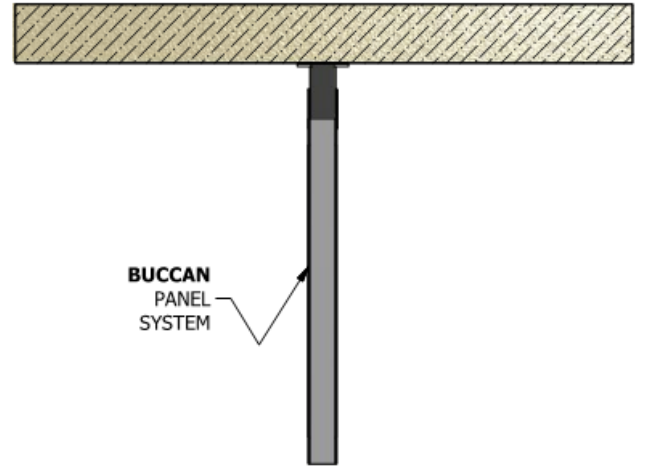
The Buccan panels are able to be mounted in a horizontal or vertical orientation.



Profiles: The Buccan Panel System is available in wall-mounted and cantilever profiles.

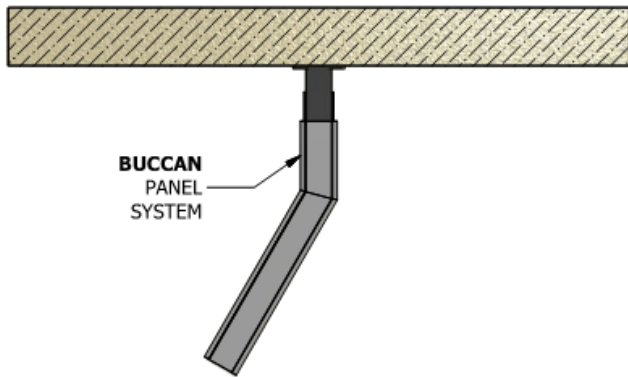


WALL MOUNTED PROFILE



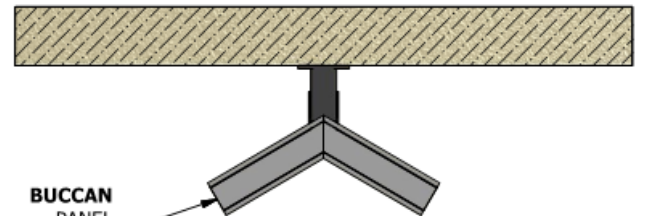
BUCCAN
PANEL
SYSTEM

CANTILEVER PROFILE



BUCCAN
PANEL
SYSTEM

TWISTED CANTILEVER PROFILE

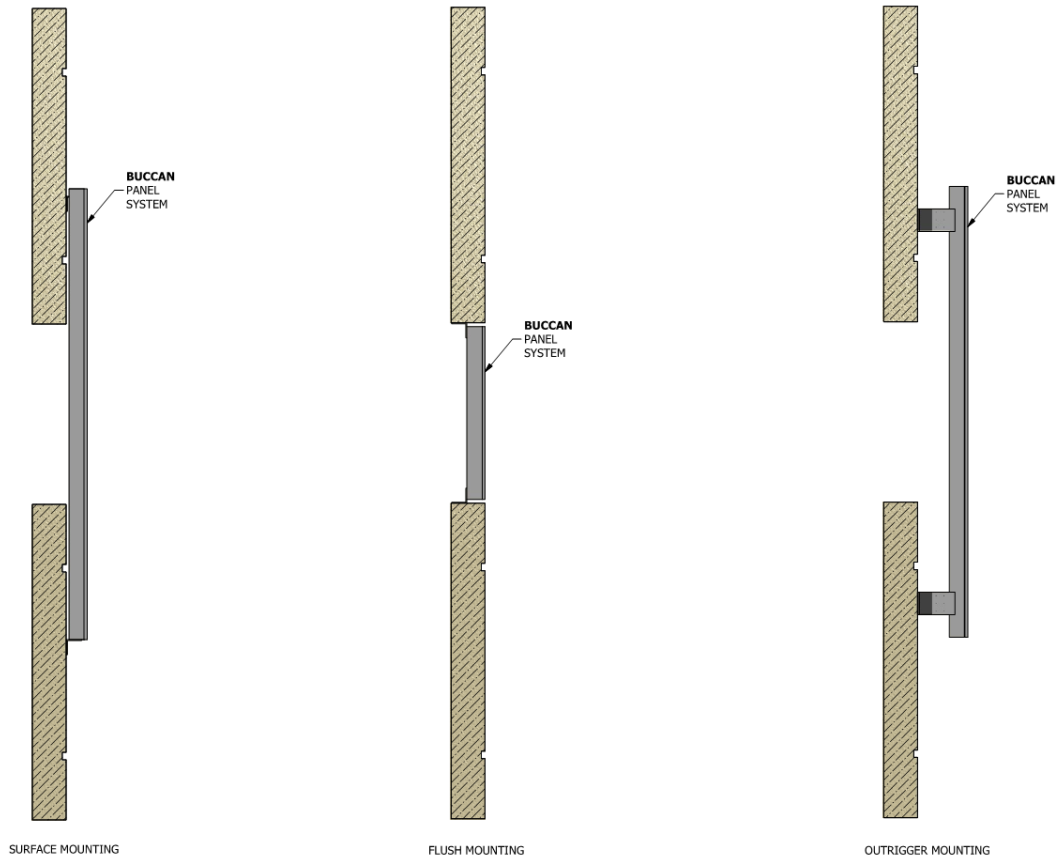


BUCCAN
PANEL
SYSTEM

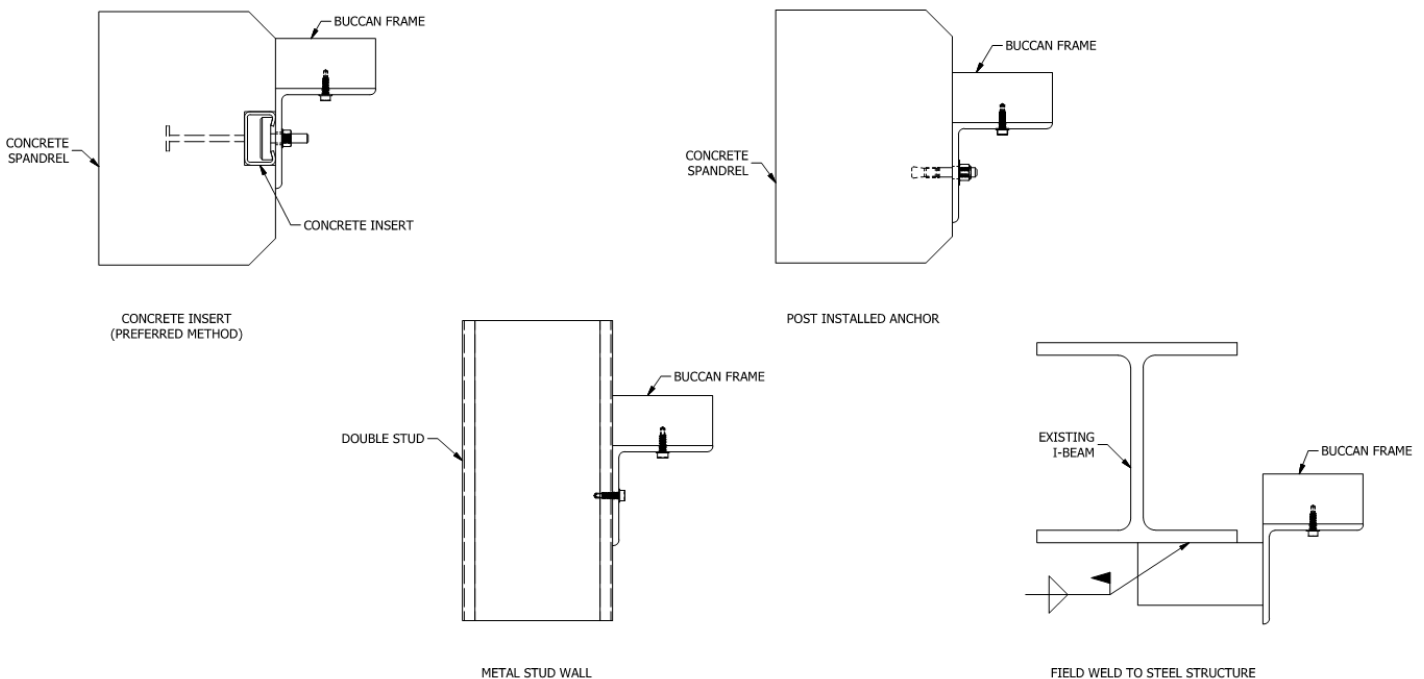
DOUBLE CANTILEVER PROFILE



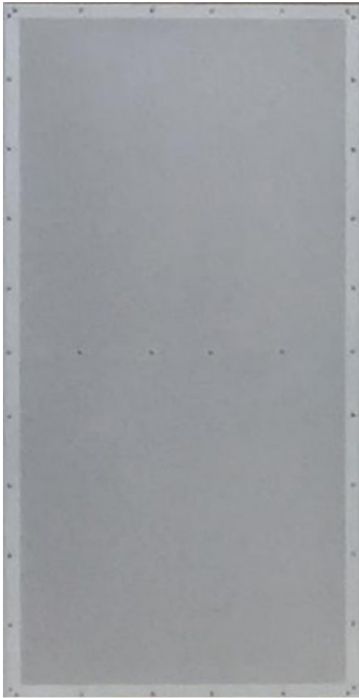
Mounting Configurations: The Buccan Panel System is able to be mounted in a multiple configurations including surface mounted, flush mounted in an opening, or mounted to outriggers off of the building.



Anchor Conditions: The Buccan Panel System is able to be mounted to structures built with different construction methods; below are some common options.



Exposed or Concealed Fasteners Options



Exposed Fasteners

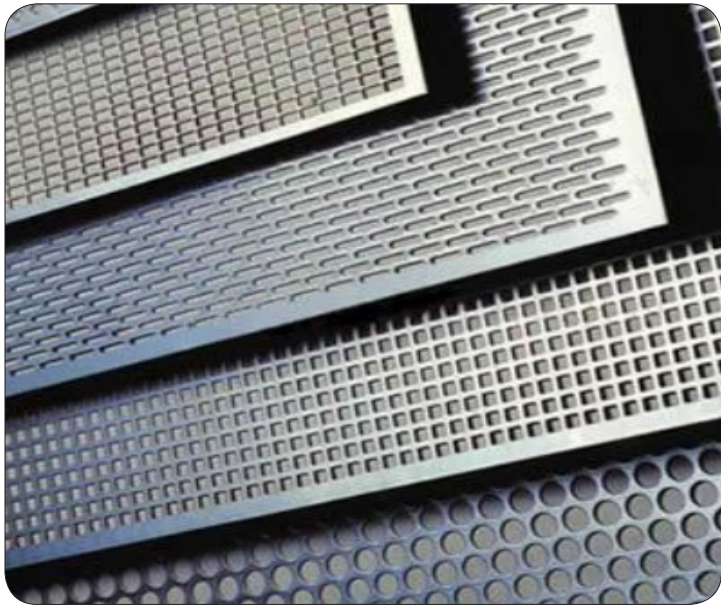
- Fasteners are exposed to view from the front of the panel.
- This option is preferred for perforated images or full color images that span more than one panel.

Concealed Fasteners

- Face fasteners are concealed from view from both the front and back of the panel offering a more modern look.



Perforation Styles: Standard Perforations to Full Perf-Images



Perforation Options

Standard Perforated Patterns:

- Round Holes
- Square Holes
- Slotted Holes

Laser Cut Patterns:

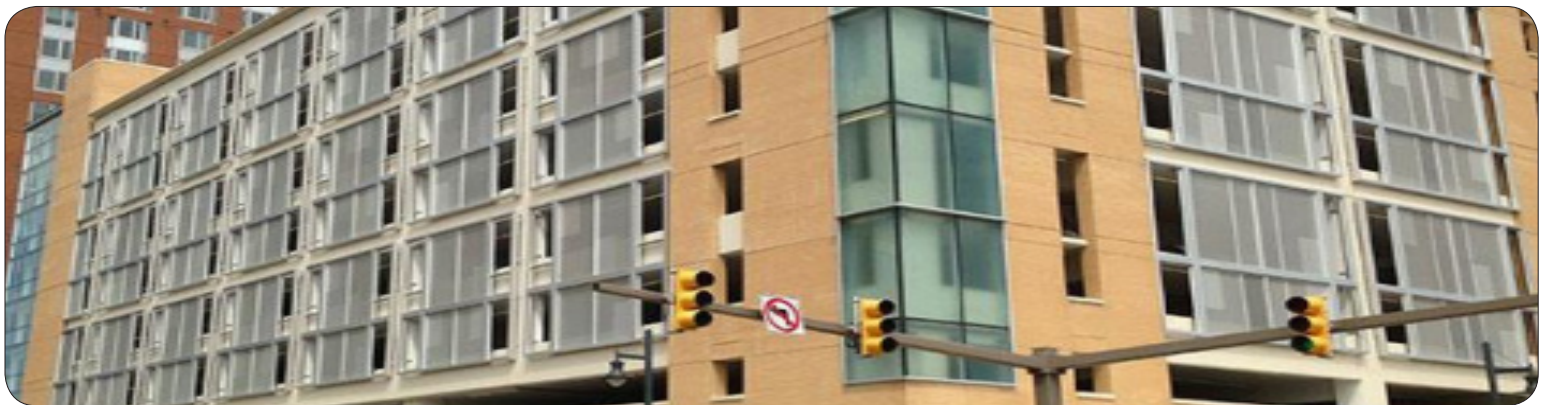
- Complex patterns that are not able to be perforated are able to be laser cut into the panels.

Perf-Image:

- A customer's artwork or image can be transformed into a perforated image including text.

Air Flow Requirements

- Bunting Architectural Metals will work with you to ensure the selected perforation option meets the stringent free air flow requirement of your project.



Paint Styles: From Monochromatic to Full-Color Image



Finish Options

Solid Colors:

- Duranar Fluoropolymer Liquid Coating
- AAMA 2605 Performance (10 Year Durability)
- Wide Range of Available Colors
- Excellent Panel-to-Panel Color Consistency

Multiple Layer Mask and Coat:

- Duranar Fluoropolymer Liquid Coating
- AAMA 2605 Performance (10 Year Durability)
- Skillfully Applied Graphics to Match Panel Seams

Full Color Sublimation:

- Long Wearing, Full Color, Dye Sublimation
- Special Care to Match Panel to Panel Artwork
- From Woodgrain to Full Color Art





Project Information

Project Name: _____
Client Name: _____
Architect: _____
General Contractor: _____
Project Location: _____

BUCCAN Panel Sizes

Elevation 1: Width:_____ Length:_____

Elevation 2: Width:_____ Length:_____

Elevation 3: Width:_____ Length:_____

Elevation 4: Width:_____ Length:_____

Total Square Footage: _____ SF

Profile

- Wall Mount
- Cantilever
- Twisted Cantilever
- Double Cantilever

Mounting Configuration

- Surface Mount
- Flush Mount
- Outrigger Mount

Single or Double Faced

- Single Faced
- Double Faced

Anchor Conditions

- Concrete Insert
- Post Install Anchors
- Field Weld
- TEKs to Double Studs

Perforation Styles

- Round Holes
 - Square Pattern
 - Square Holes
 - Staggered Pattern
 - Slotted Holes
 - Perf-Image
- Hole Dia:_____ Slot Length: _____
- Spacing:_____

Face Styles

- Exposed Fastener
- Concealed Fastener

Paint Styles

- Monochromatic
- Solid Color
- Multiple Layer
- Whites/Lights
- Metallics/Micas
- Exotics/Brights
- Sunstorm
- Full Color Sublimation

Contact Us



800-735-0445
www.buntingarchitecturalmetals.com

sales@buntingarchitecturalmetals.com
20 River Road, Verona, PA 15147