

# **BUNTING** ARCHITECTURAL METALS

## **BAM-7530** Curtain Wall System

The BAM-7530 unitized, curtain wall is a practical design that can accommodate multiple conditions and save installation time at the job site. This curtain wall is thermally insulated with a system of superior performance and structural strength Insulbar®, which besides its excellent thermal performance, allows dual finish design flexibility.



### System Description:

- Frame depth: 7 ½"
- Sight Line: 3"
- Designed for 1" insulated glass
- Compatible with ES-9000 impact door
- Design Load: ±50 psf
- Water infiltration: 15 psf
- U-Value: 0.41 (with ¼" SB60 - ½" Air- ¼" Clear)
- Four-sided SSG tested for bomb blast: 5.8 psi; 41.1 psi - msec; ASTM. Minimal hazard; GSA Condition 2; UFC DoD medium level

### Features:

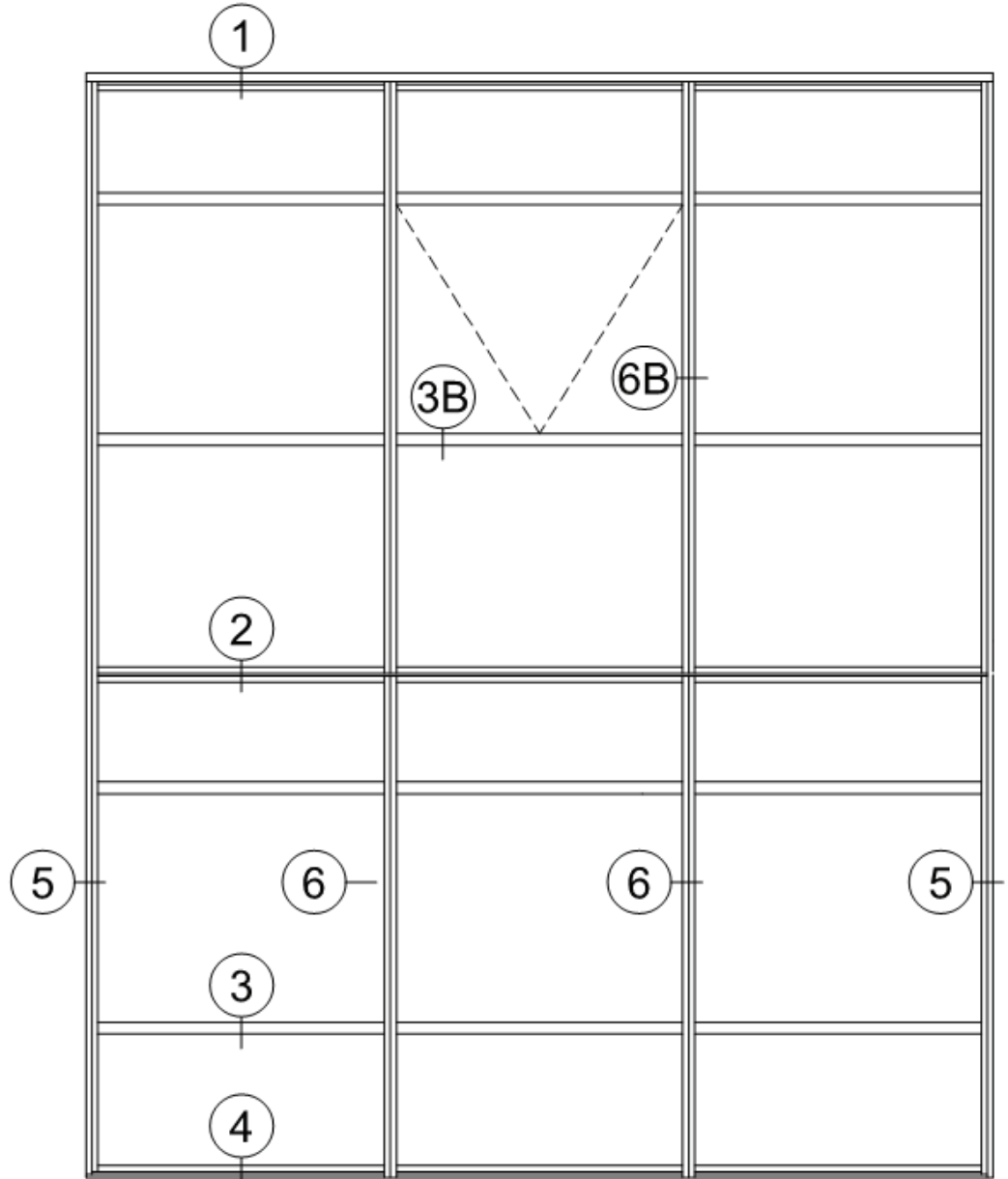
- Pre-assembled and pre-glazed
- Two or four-sided SSG and captured options
- 90° inside and outside corners
- Integrated vents
- Anodized, painted or wood grain finishes available

Website: [www.BuntingArchitecturalMetals.com](http://www.BuntingArchitecturalMetals.com)

Phone: 412-820-2200



Elevation



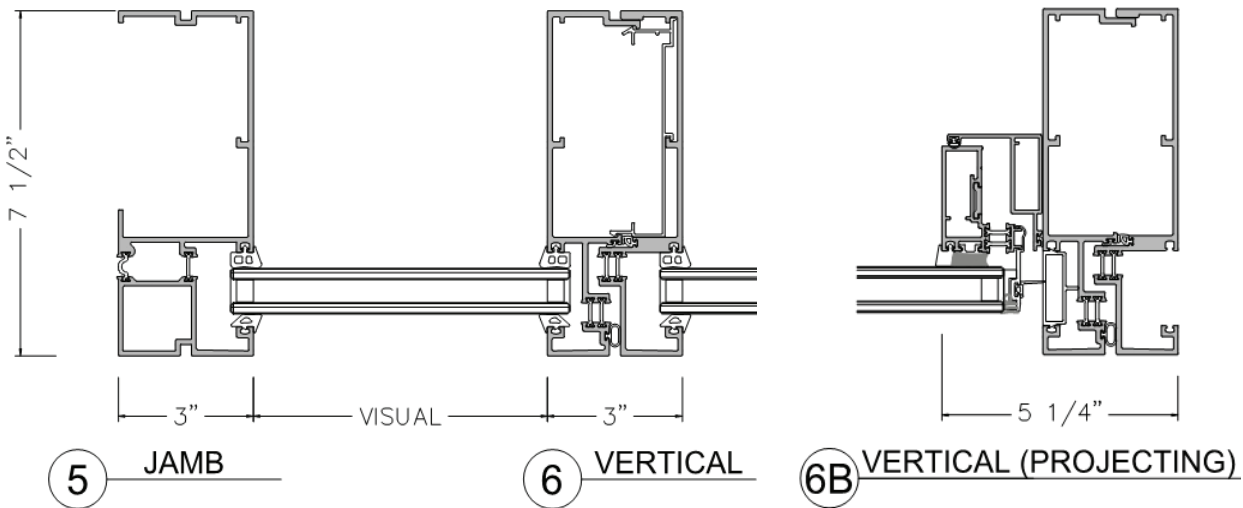
# B BUNTING

## ARCHITECTURAL METALS

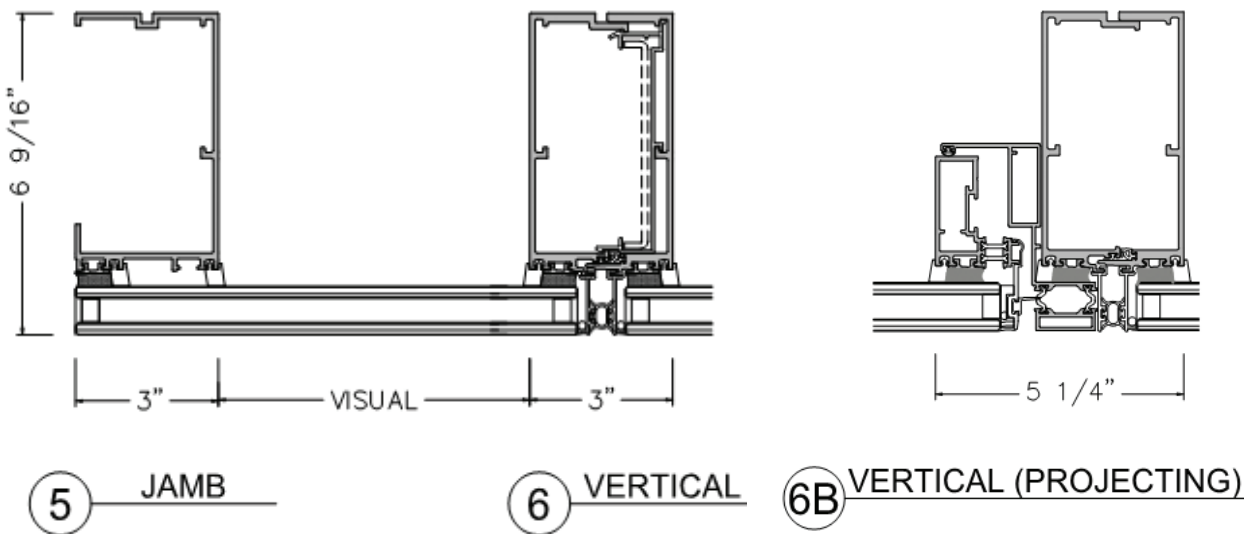
BAM-7530 Curtain Wall System

### Horizontal Sections

Captured

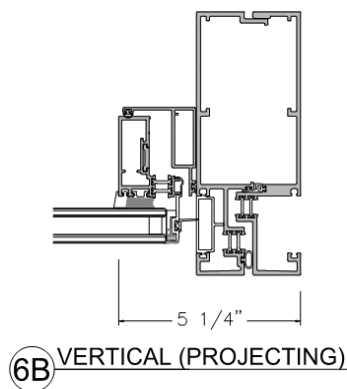
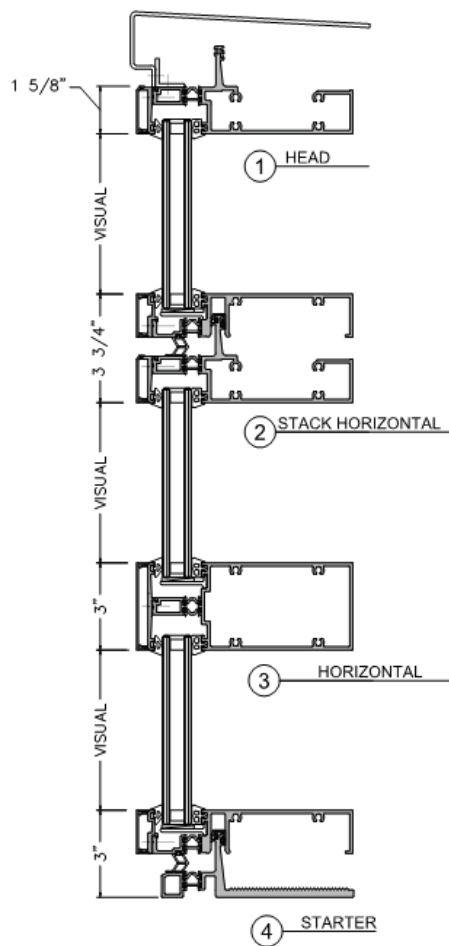


SSG



### Vertical Sections

Captured



SSG

