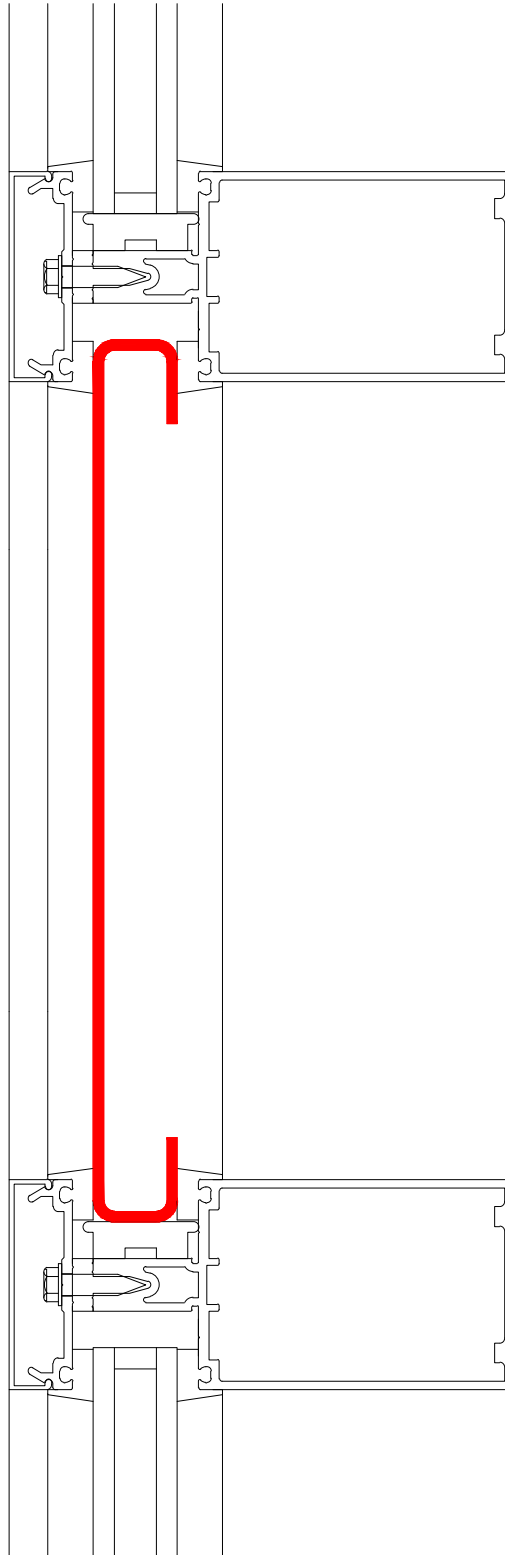


# DETAILING MANUAL

## Kawneer 1600 Compatible Glazed Panels



### Description

Bunting Architectural Metals glazed aluminum panels are incorporated into curtain wall in lieu of glass units in areas where an opaque finish is desired. Glazed panels are secured to the curtain wall framing using the same method as the glass units. Back pans with insulation can be installed behind the glazed panels to increase the thermal efficiency in these opaque areas.

### Characteristics

**Material:** Aluminum 3003-H14

**Material Thickness:** 0.125" (1/8") Standard, Other Thicknesses Available

**Pan Depth:** 1" Standard, Other Depths Available

**Face Dimensions:** Up to 5' x 10' In Any Increment

**Oversize Face Dimensions:** Up to 5' x 20' Available

**Paint Finish:** High Performance Fluoropolymer Finish

**Note:** Thermal performance and air/water proofing details are the responsibility of the project engineer. Bunting Architectural Metals does not control the selection of product configurations, materials, or hardware and assumes no responsibility therefore.

