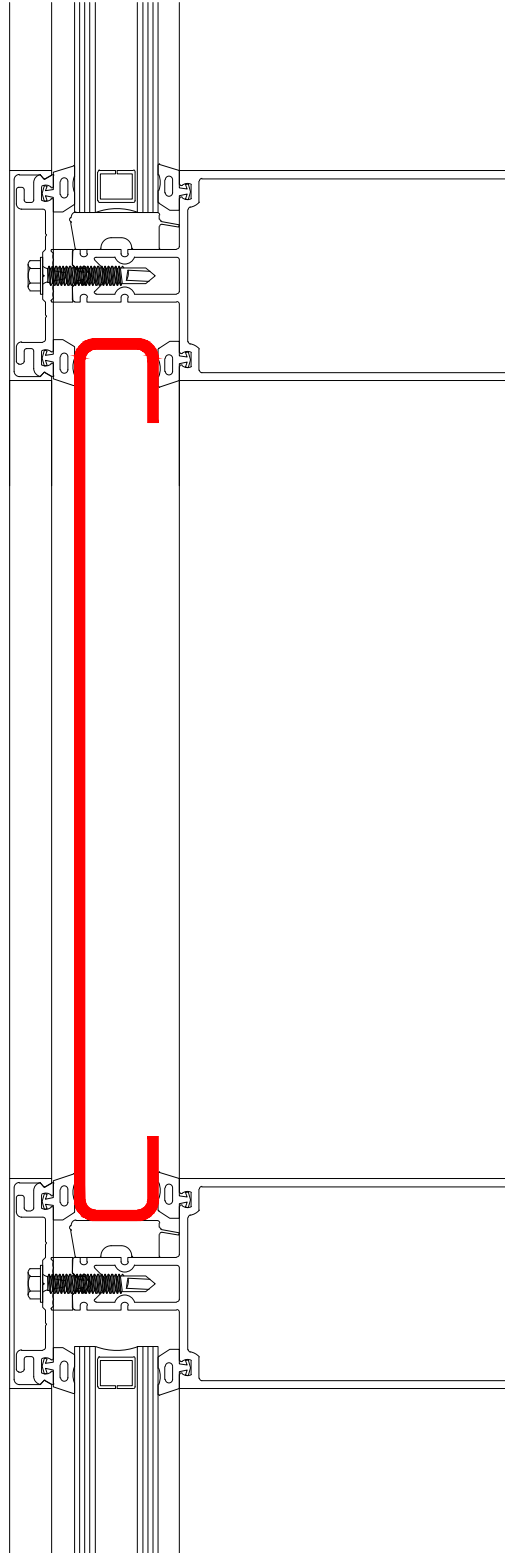


DETAILING MANUAL

Old Castle Compatible Glazed Panels



DETAILING MANUAL

Old Castle Compatible Glazed Panels

Description

Bunting Architectural Metals glazed aluminum panels are incorporated into curtain wall in lieu of glass units in areas where an opaque finish is desired. Glazed panels are secured to the curtain wall framing using the same method as the glass units. Back pans with insulation can be installed behind the glazed panels to increase the thermal efficiency in these opaque areas.

Characteristics

Material: Aluminum 3003-H14

Material Thickness: 0.125" (1/8") Standard, Other Thicknesses Available

Pan Depth: 1" Standard, Other Depths Available

Face Dimensions: Up to 5' x 10' In Any Increment

Oversize Face Dimensions: Up to 5' x 20' Available

Paint Finish: High Performance Fluoropolymer Finish

Note: Thermal performance and air/water proofing details are the responsibility of the project engineer. Bunting Architectural Metals does not control the selection of product configurations, materials, or hardware and assumes no responsibility therefore.

