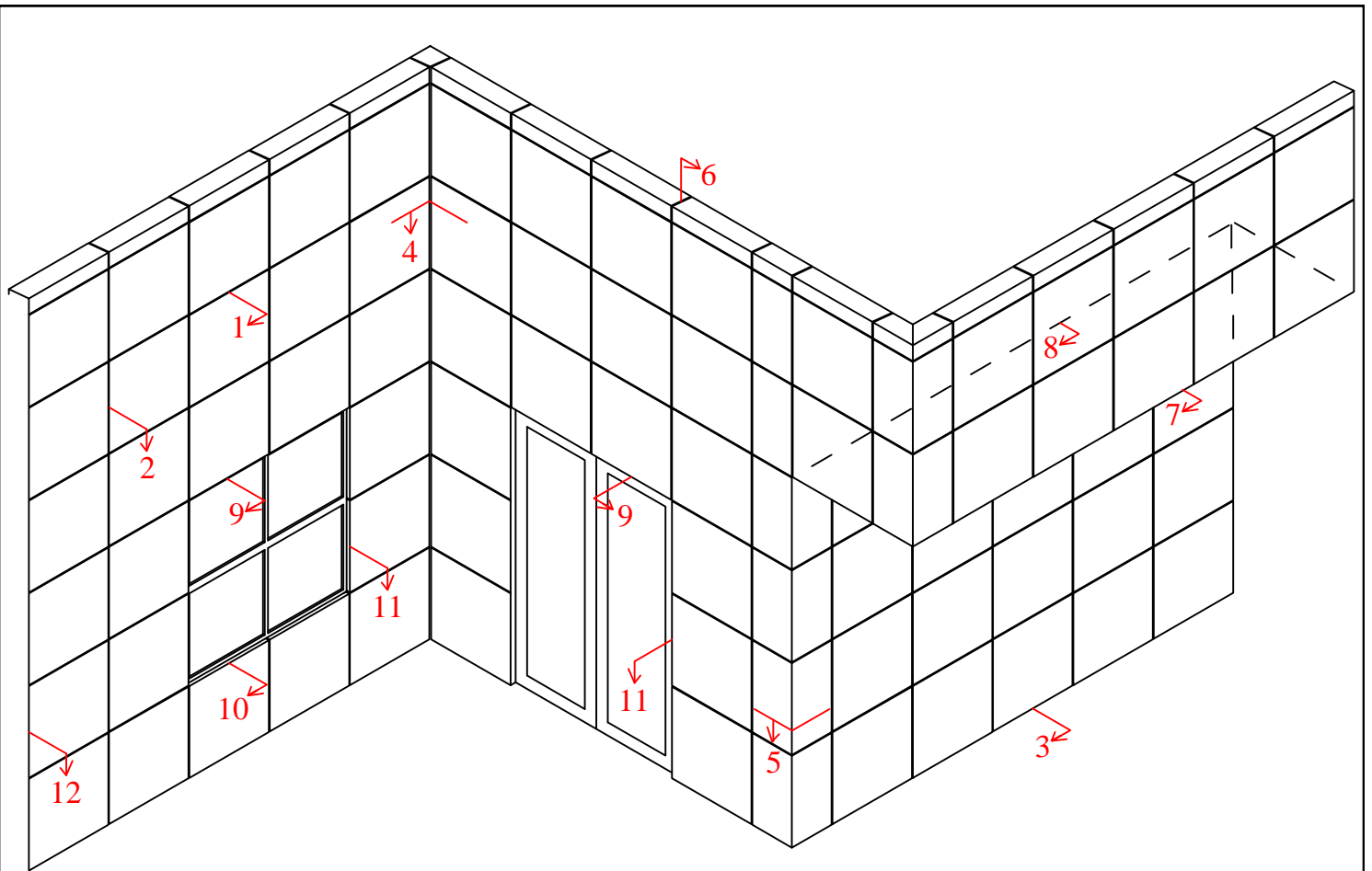




Aria Composite Panel System

Detail Drawings





DETAILS

1. HORIZONTAL JOINT
2. VERTICAL JOINT
3. SILL
4. 90° INSIDE CORNER
5. 90° OUTSIDE CORNER
6. PARAPET
7. FASCIA TO SOFFIT
8. SOFFIT TO FASCIA
9. HEADER
10. WINDOW SILL
11. JAMB
12. END



Bunting Architectural Metals
 20 River Road
 Verona, PA 15147
 Tel. - 412-820-2200
 Fax - 412-820-4404
www.buntingarchitecturalmetals.com

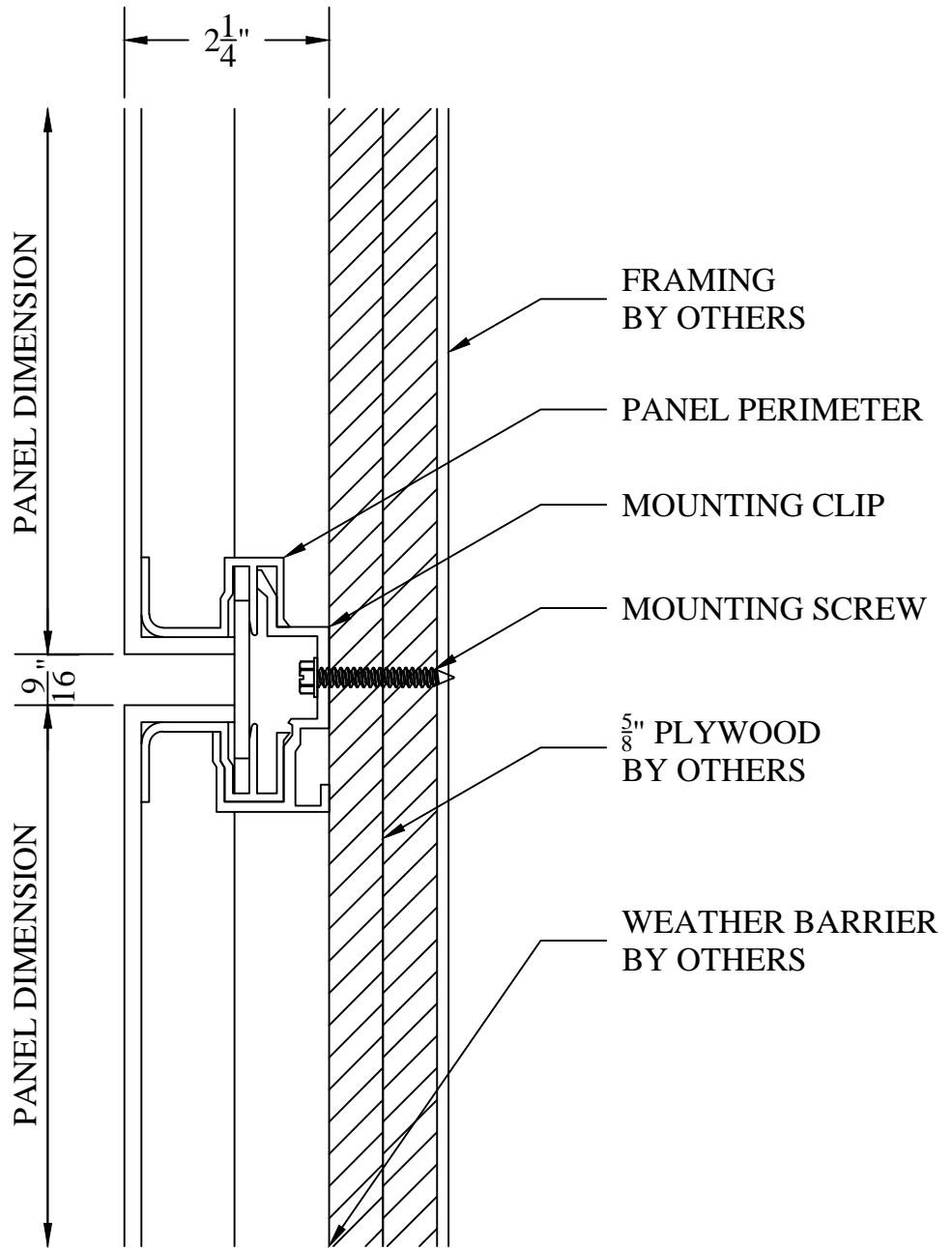
DATE: OCTOBER 1, 2015

SYSTEM:

COMPOSITE METAL PANEL SYSTEM

DETAIL:

DETAIL INDEX



Bunting Architectural Metals
 20 River Road
 Verona, PA 15147
 Tel. - 412-820-2200
 Fax - 412-820-4404
 www.buntingarchitecturalmetals.com

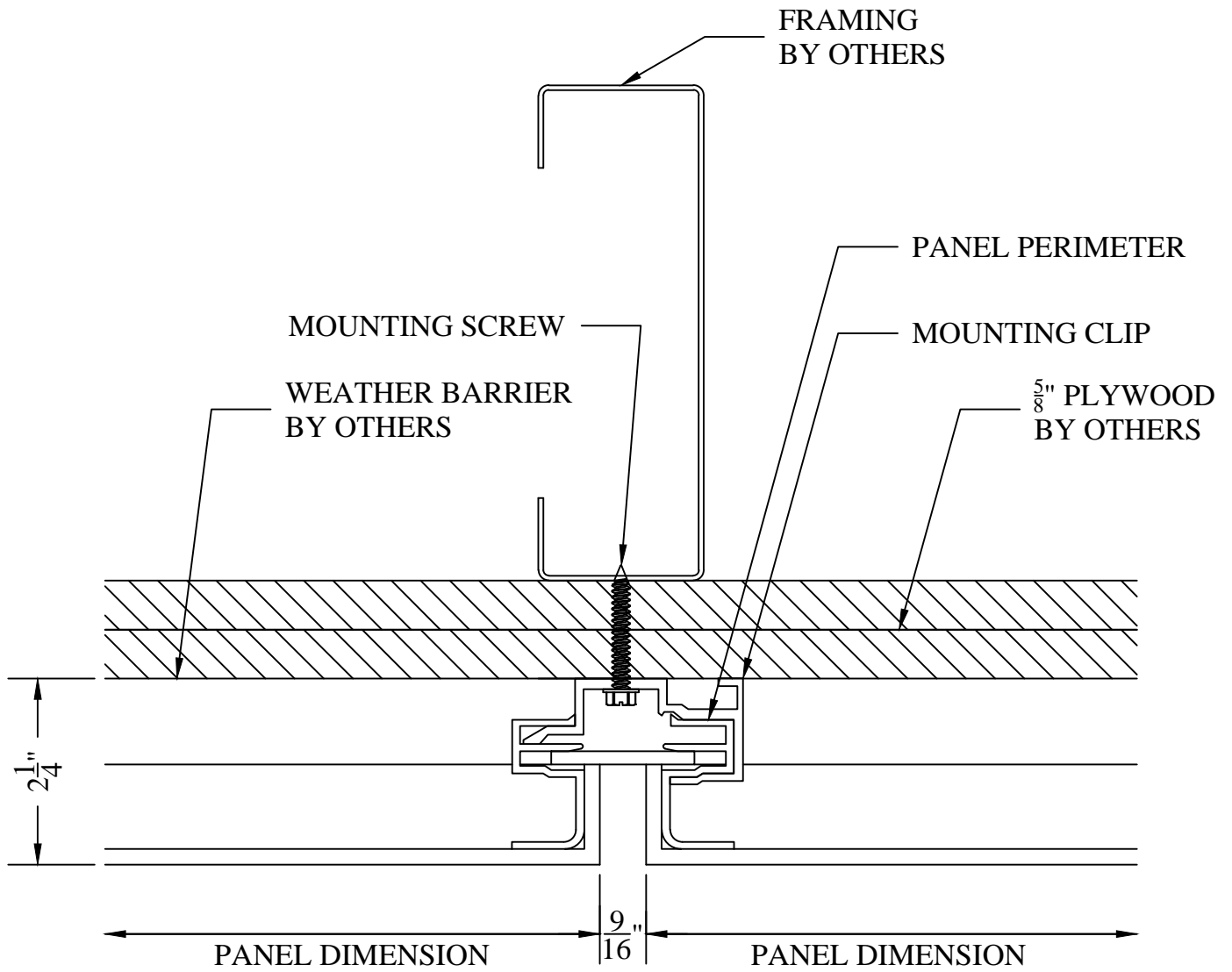
DATE: OCTOBER 1, 2015

SYSTEM:

COMPOSITE METAL PANEL SYSTEM

DETAIL:

1/A - HORIZONTAL JOINT

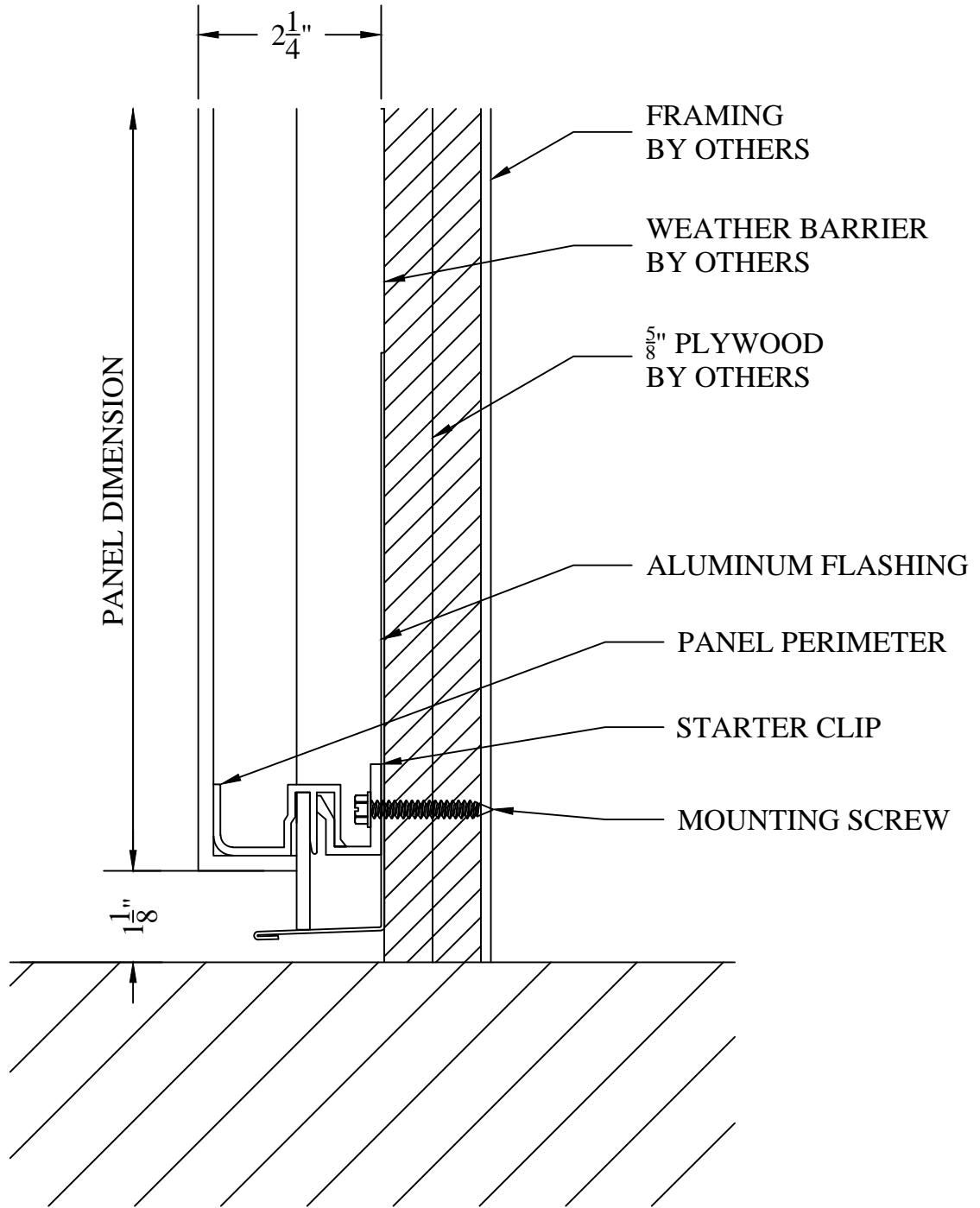


Bunting Architectural Metals
 20 River Road
 Verona, PA 15147
 Tel. - 412-820-2200
 Fax - 412-820-4404
 www.buntingarchitecturalmetals.com

DATE: OCTOBER 1, 2015

SYSTEM:
COMPOSITE METAL PANEL SYSTEM

DETAIL:
 2/A - VERTICAL JOINT



Bunting Architectural Metals
 20 River Road
 Verona, PA 15147
 Tel. - 412-820-2200
 Fax - 412-820-4404
 www.buntingarchitecturalmetals.com

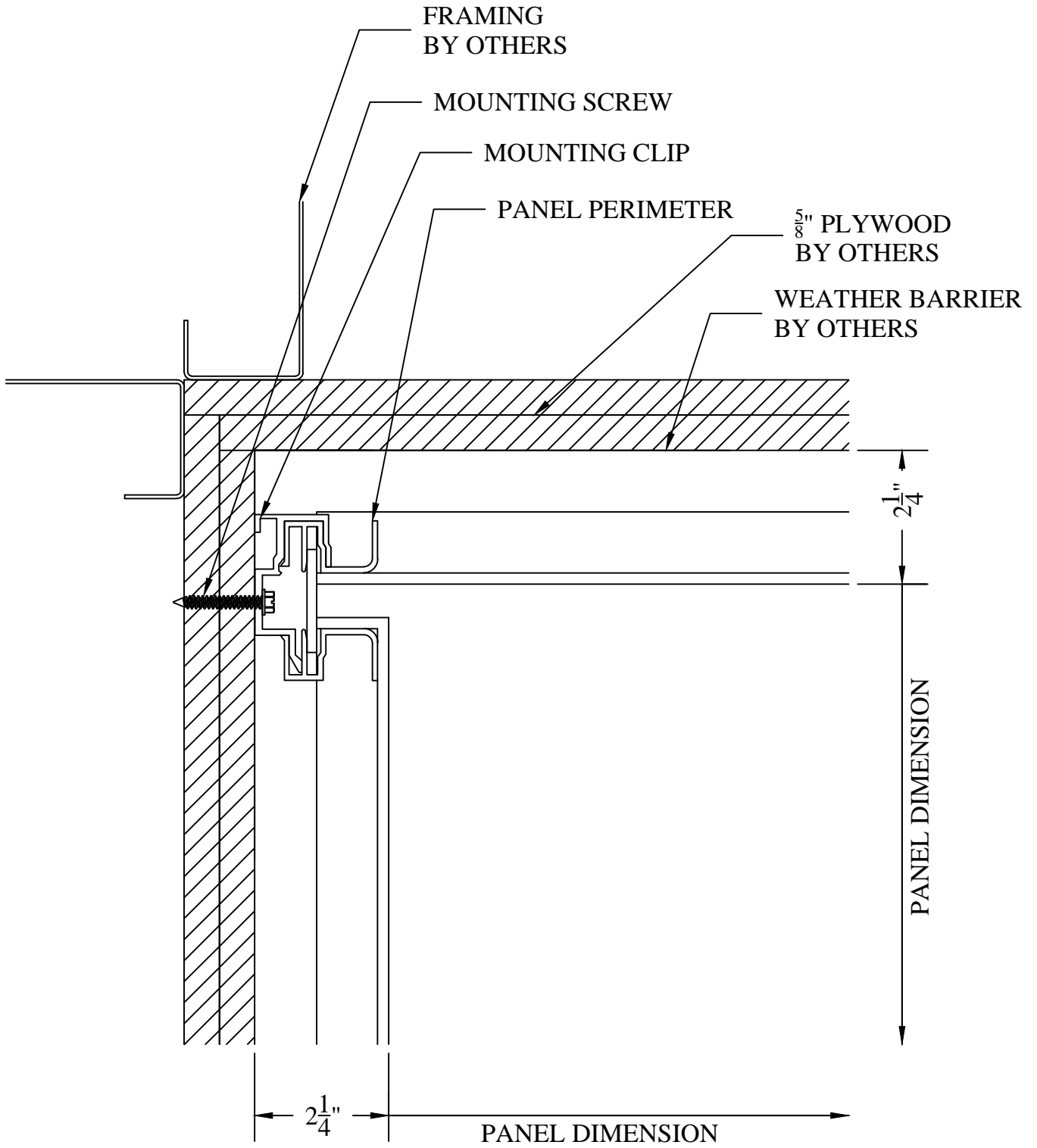
DATE: OCTOBER 1, 2015

SYSTEM:

COMPOSITE METAL PANEL SYSTEM

DETAIL:

3/A - SILL



Bunting Architectural Metals
 20 River Road
 Verona, PA 15147
 Tel. - 412-820-2200
 Fax - 412-820-4404
www.buntingarchitecturalmetals.com

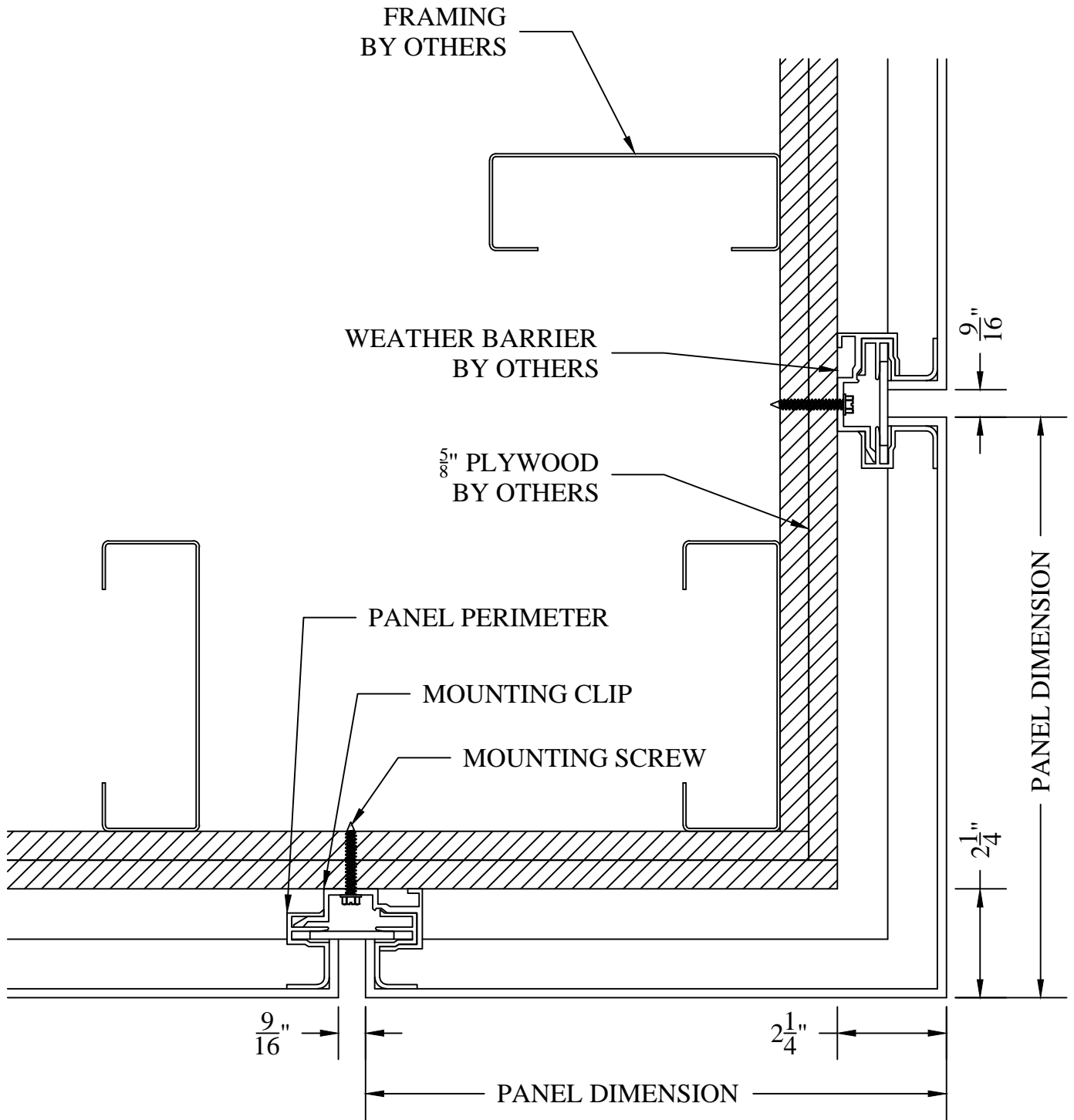
DATE: OCTOBER 1, 2015

SYSTEM:

COMPOSITE METAL PANEL SYSTEM

DETAIL:

4/A - 90° INSIDE CORNER



Bunting Architectural Metals
 20 River Road
 Verona, PA 15147
 Tel. - 412-820-2200
 Fax - 412-820-4404
 www.buntingarchitecturalmetals.com

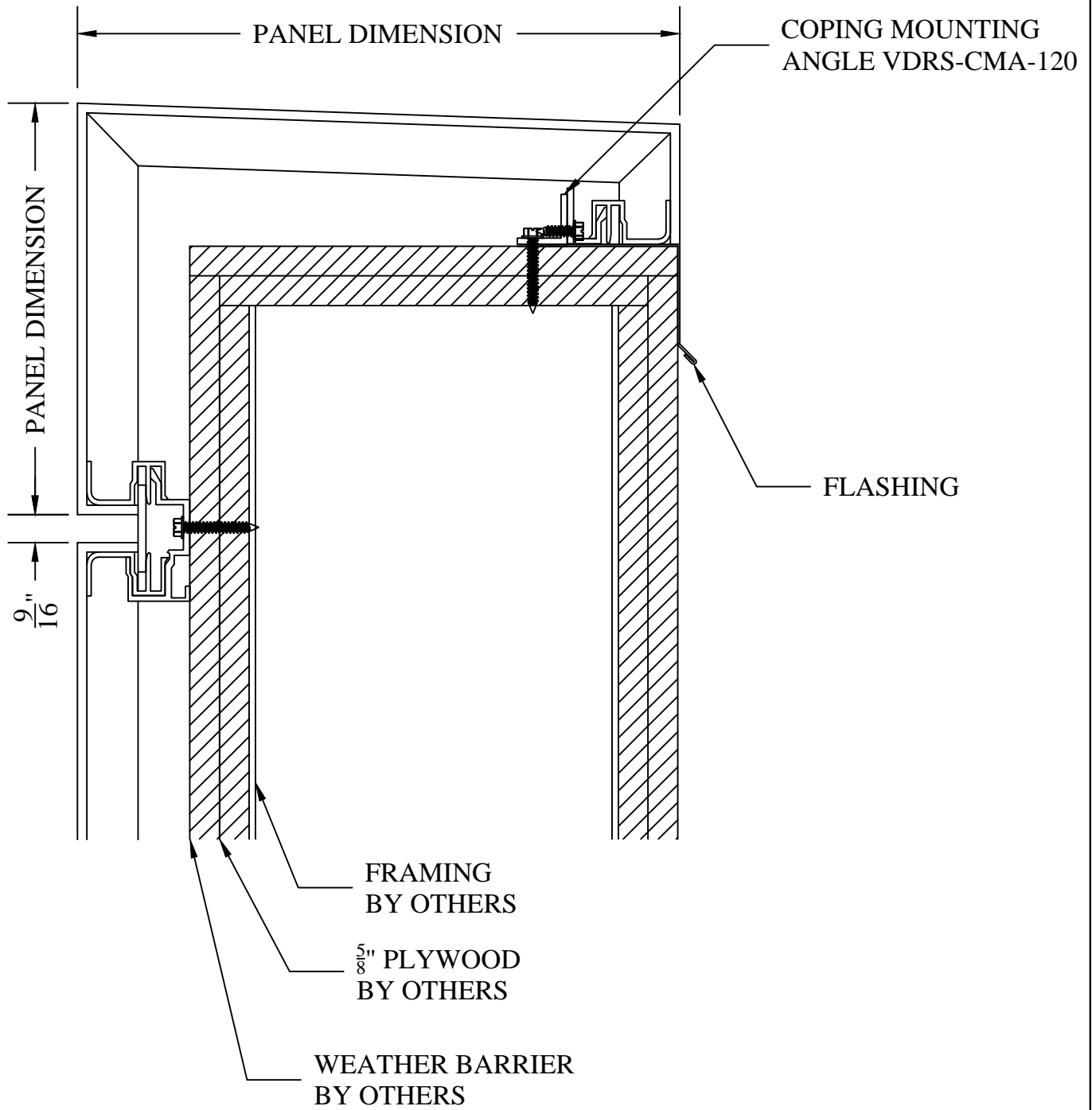
DATE: OCTOBER 1, 2015

SYSTEM:

COMPOSITE METAL PANEL SYSTEM

DETAIL:

5/A - 90° OUTSIDE CORNER

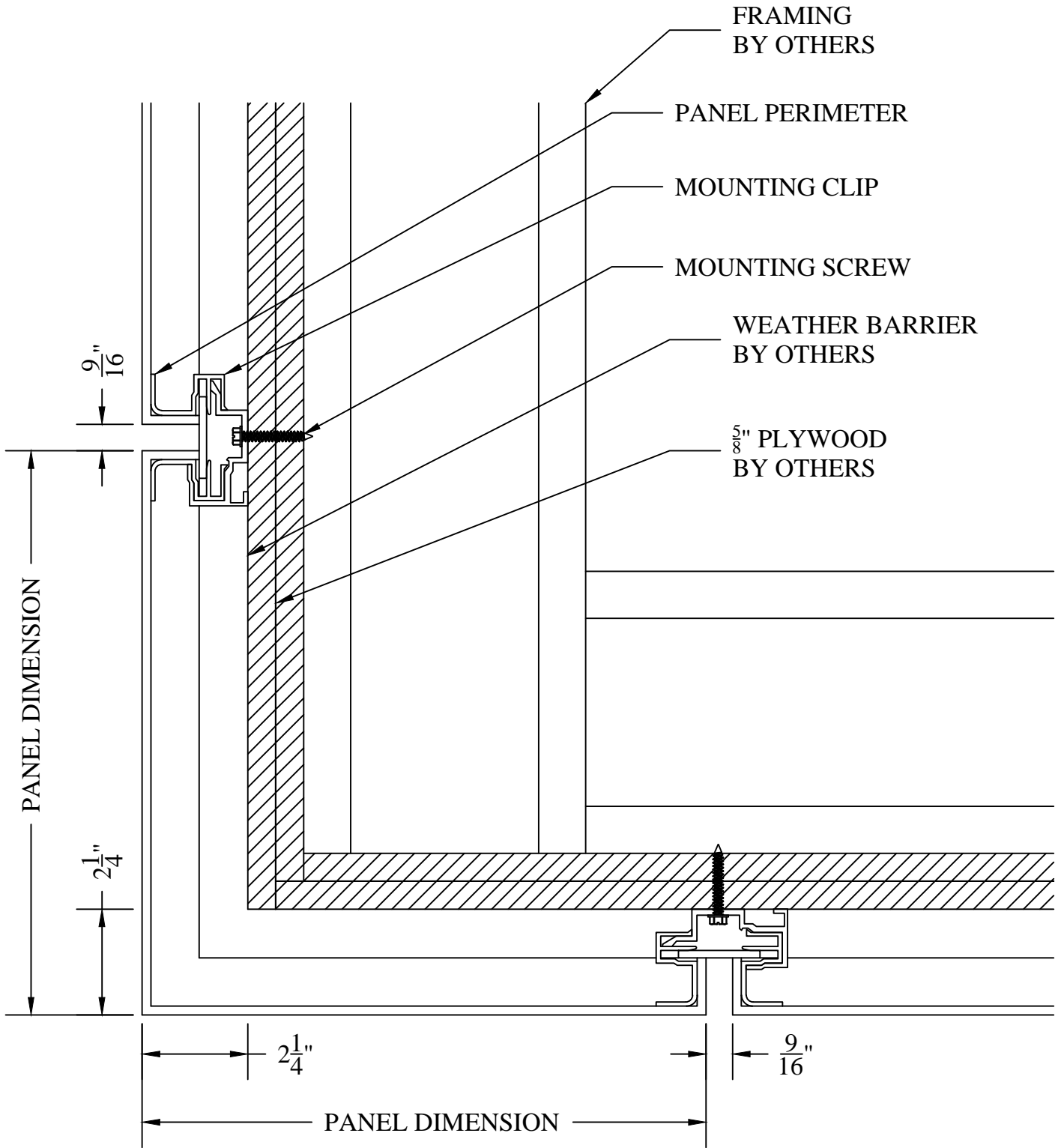


Bunting Architectural Metals
 20 River Road
 Verona, PA 15147
 Tel. - 412-820-2200
 Fax - 412-820-4404
 www.buntingarchitecturalmetals.com

DATE: OCTOBER 1, 2015

SYSTEM:
COMPOSITE METAL PANEL SYSTEM

DETAIL:
 6/A - PARAPET

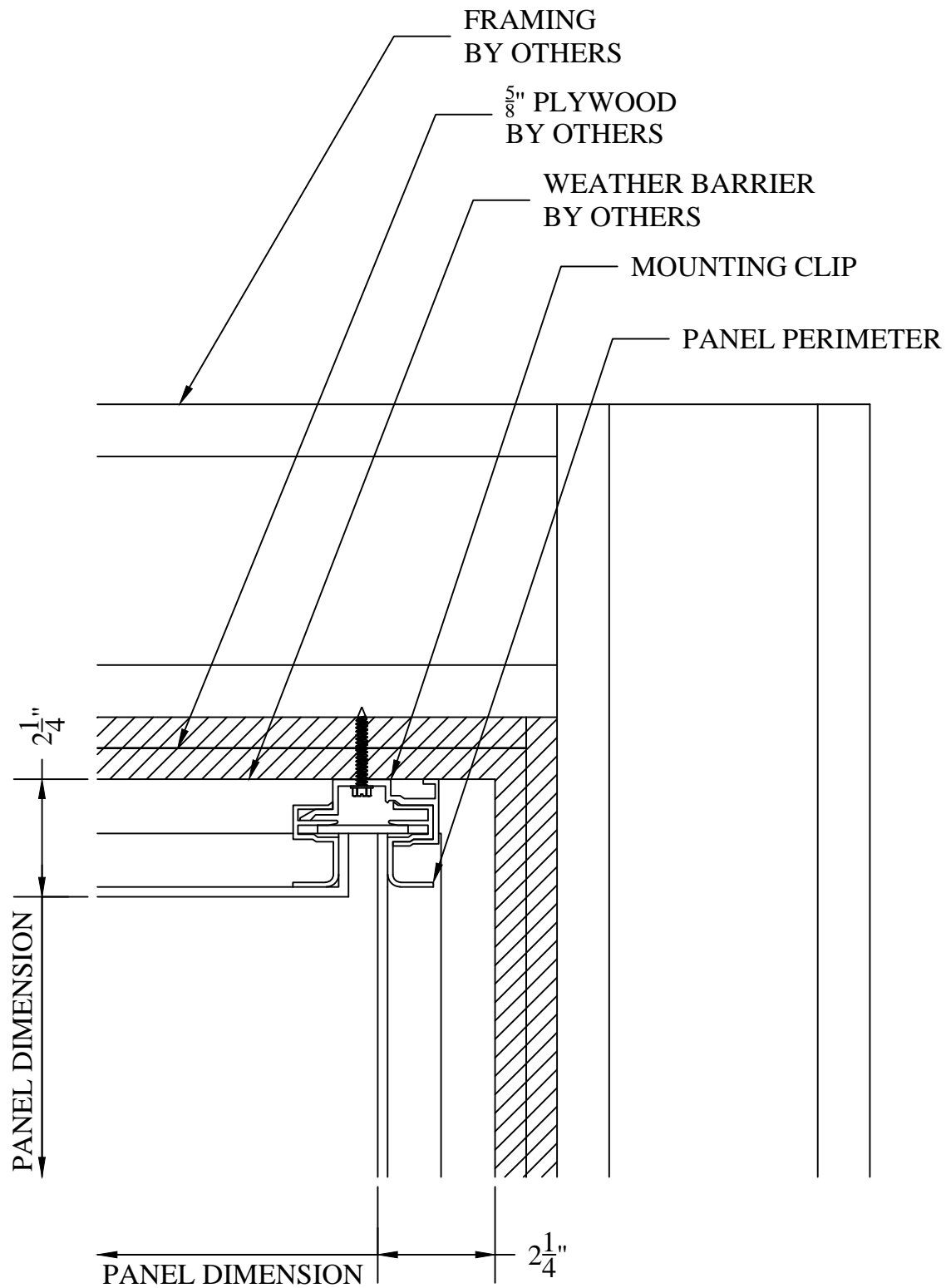


Bunting Architectural Metals
 20 River Road
 Verona, PA 15147
 Tel. - 412-820-2200
 Fax - 412-820-4404
 www.buntingarchitecturalmetals.com

DATE: OCTOBER 1, 2015

SYSTEM:
COMPOSITE METAL PANEL SYSTEM

DETAIL:
7/A - FASCIA TO SOFFIT



Bunting Architectural Metals
 20 River Road
 Verona, PA 15147
 Tel. - 412-820-2200
 Fax - 412-820-4404
www.buntingarchitecturalmetals.com

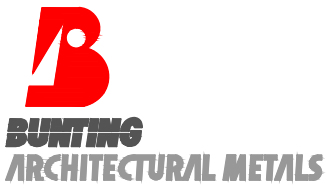
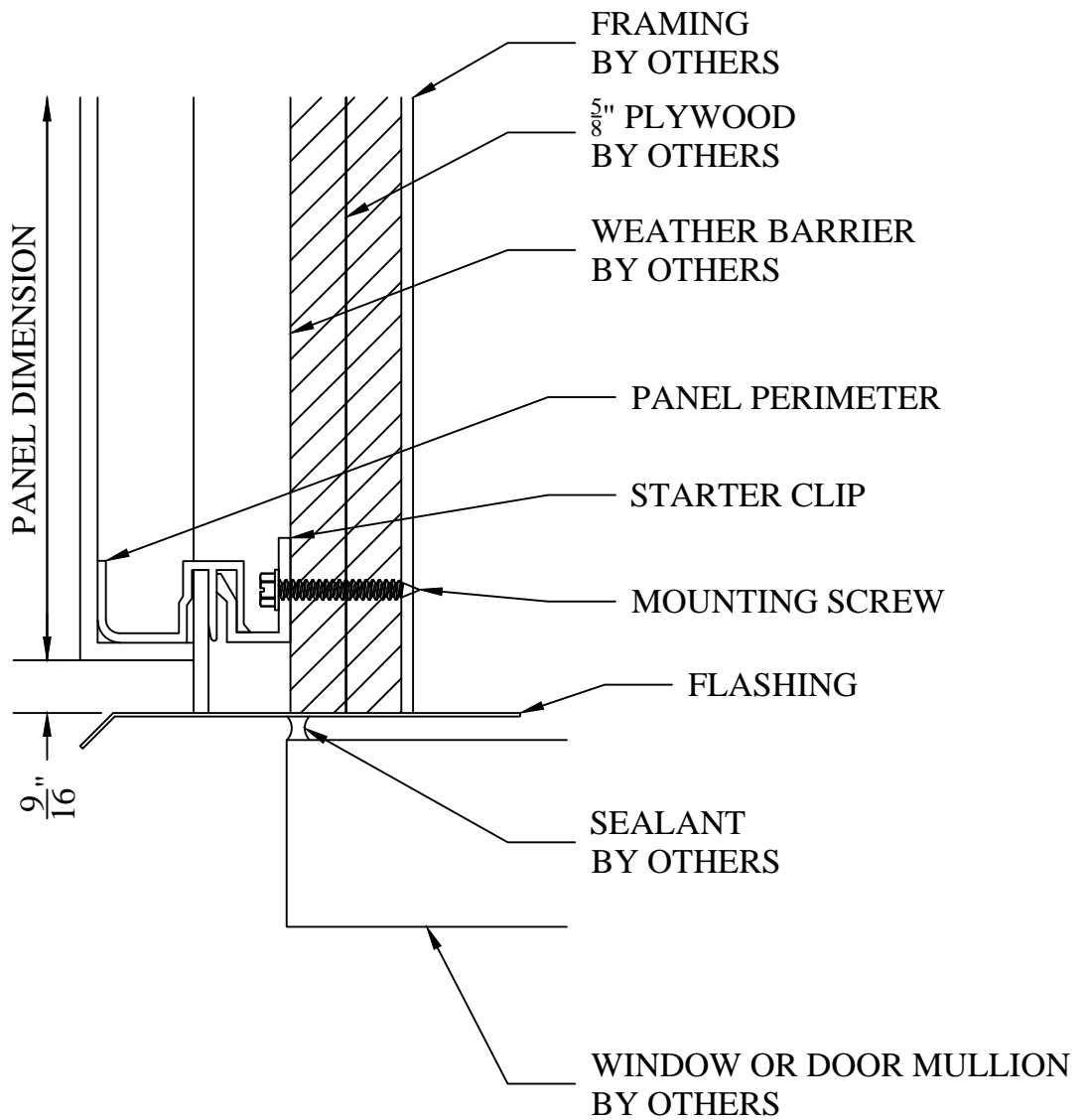
DATE: OCTOBER 1, 2015

SYSTEM:

COMPOSITE METAL PANEL SYSTEM

DETAIL:

8/A - SOFFIT TO FASCIA



Bunting Architectural Metals
 20 River Road
 Verona, PA 15147
 Tel. - 412-820-2200
 Fax - 412-820-4404
 www.buntingarchitecturalmetals.com

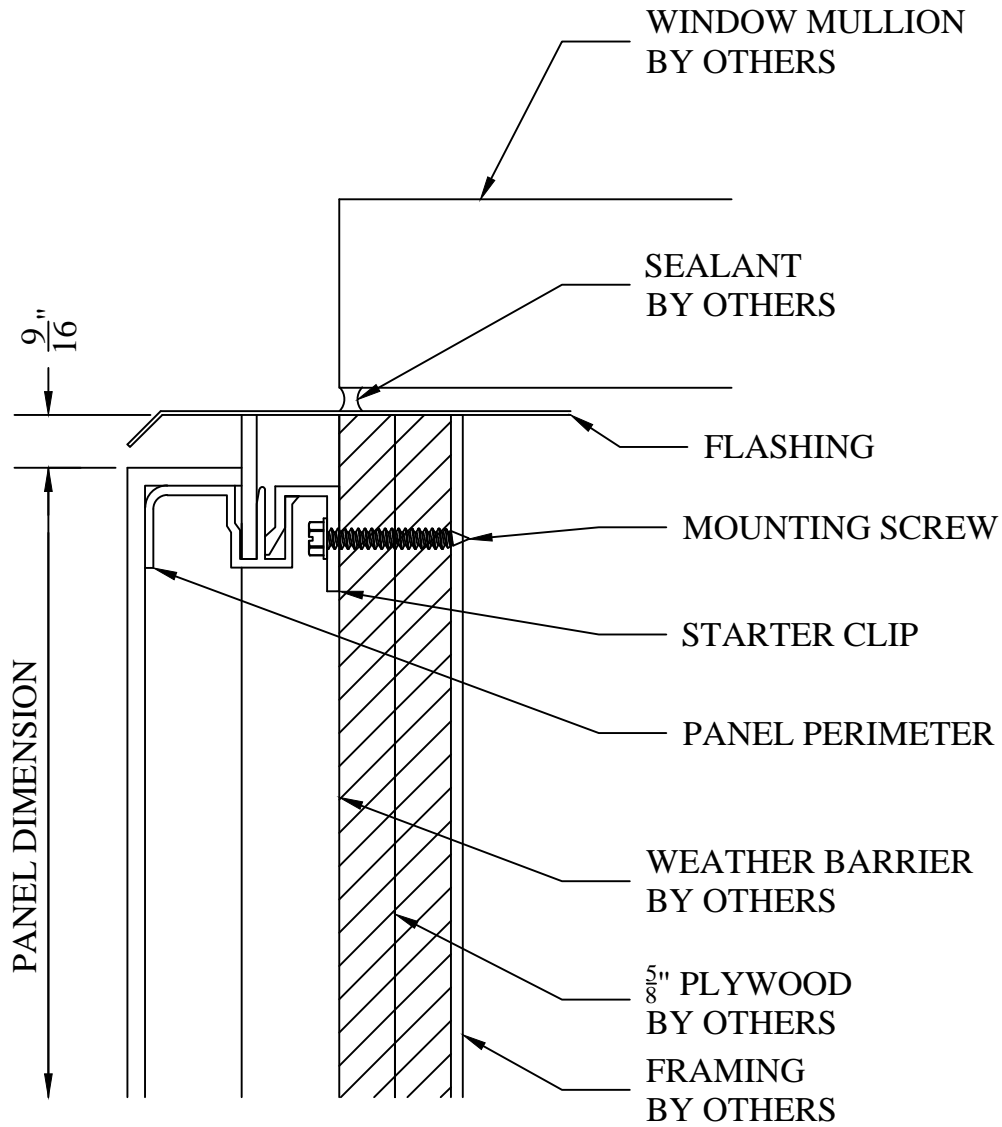
DATE: OCTOBER 1, 2015

SYSTEM:

COMPOSITE METAL PANEL SYSTEM

DETAIL:

9/A - HEADER



Bunting Architectural Metals
 20 River Road
 Verona, PA 15147
 Tel. - 412-820-2200
 Fax - 412-820-4404
www.buntingarchitecturalmetals.com

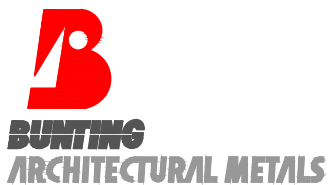
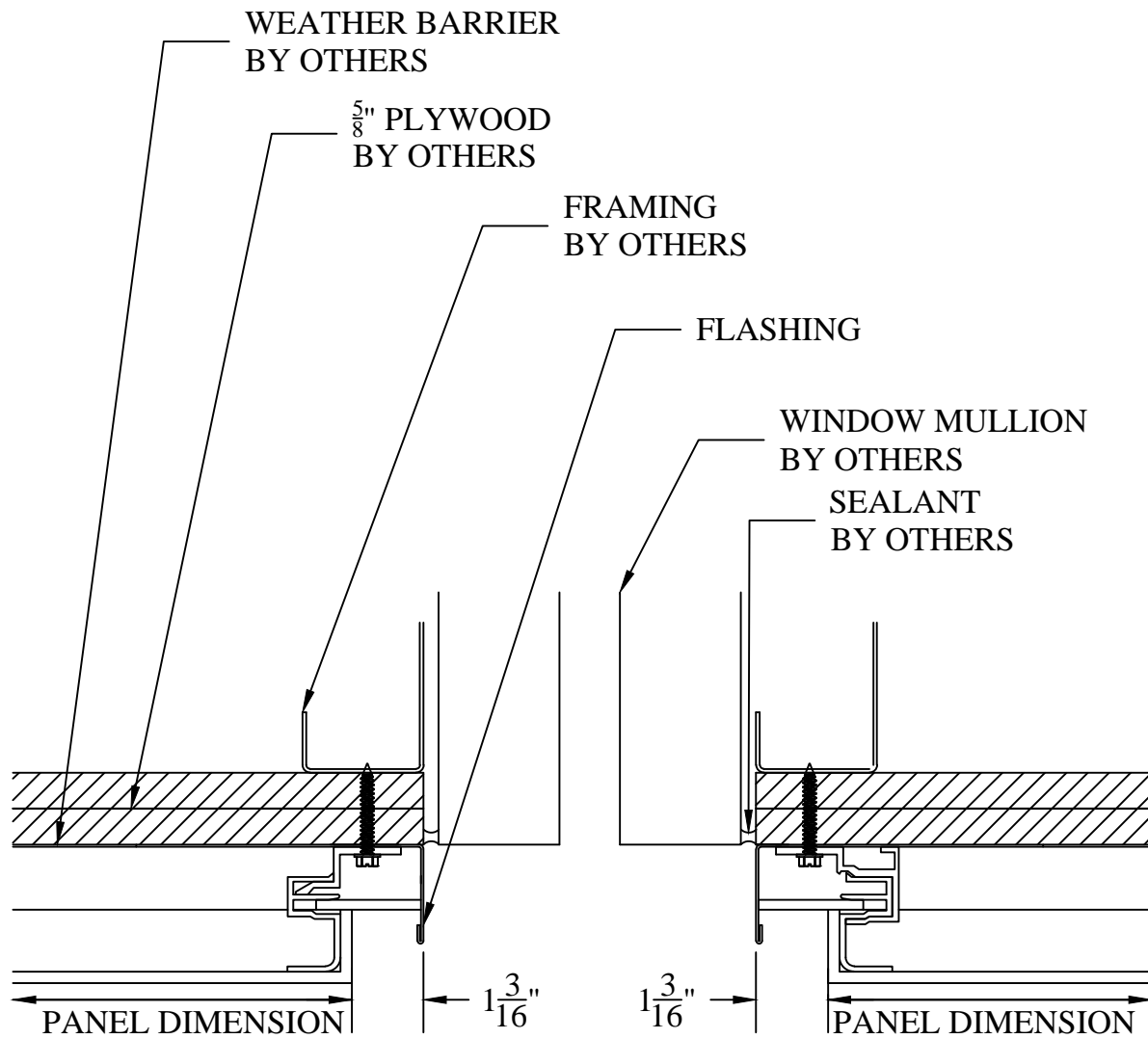
DATE: OCTOBER 1, 2015

SYSTEM:

COMPOSITE METAL PANEL SYSTEM

DETAIL:

10/A - WINDOW SILL



Bunting Architectural Metals
20 River Road
Verona, PA 15147
Tel. - 412-820-2200
Fax - 412-820-4404
www.buntingarchitecturalmetals.com

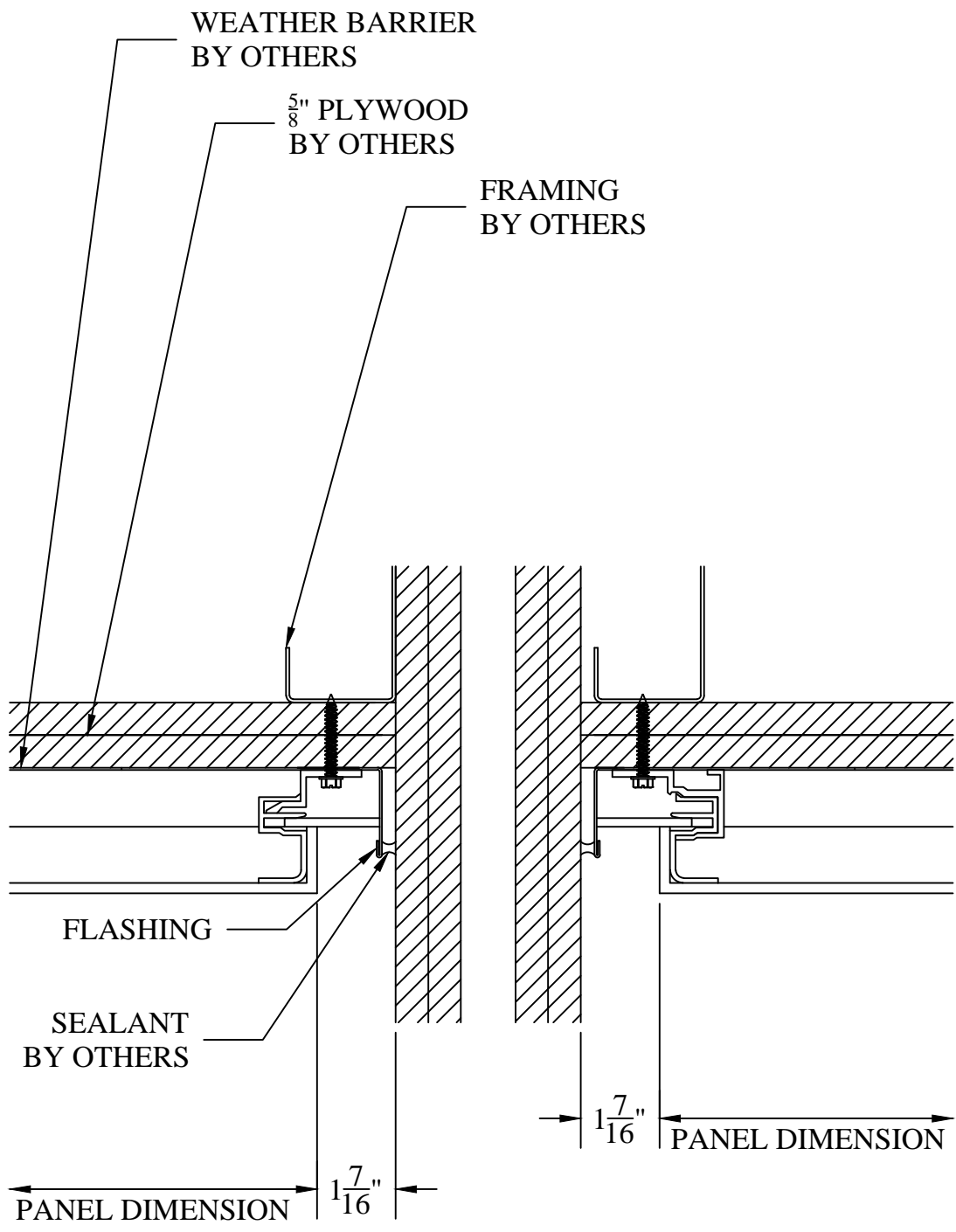
DATE: OCTOBER 1, 2015

SYSTEM:

COMPOSITE METAL PANEL SYSTEM

DETAIL:

11/A - JAMB



Bunting Architectural Metals
20 River Road
Verona, PA 15147
Tel. - 412-820-2200
Fax - 412-820-4404
www.buntingarchitecturalmetals.com

DATE: OCTOBER 1, 2015

SYSTEM:
COMPOSITE METAL PANEL SYSTEM

DETAIL:
12/A - END